

Antony Waste Handling Cell Limited

CIN: L90001MH2001PLC130485



Ref.: AW/SEC/BSE/2023-24/57

Date: October 16, 2023

To,
Listing Department
BSE Limited
Phiroze Jeejeebhoy Towers
Dalal Street, Fort
Mumbai - 400001

Script Code: 543254

Dear Madam/Sir,

Sub. : Business Update for Quarter end Half Year ended September 30, 2023

Ref. : Regulation 30 of SEBI (Listing Obligations and Disclosure Requirements), Regulations 2015 ("SEBI Listing Regulations")

In accordance with SEBI Listing Regulations and Code of Practices and Procedures for Fair Disclosure of Unpublished Price Sensitive Information in terms of Regulation 8 of SEBI (Prohibition of Insider Trading) Regulations, 2015, the following is our business update highlighting the strong performance of the Company for the quarter and half year ended September 30, 2023 ("Q2 FY24" & H1FY24):

Our Company is making significant progress on our FY2024 priorities, focusing on boosting core revenue generation and optimizing our cost structure. We are elated to announce the inauguration of India's first Waste to Energy plant selling power under Green Energy Open Access Rules. This milestone project was inaugurated by the esteemed Prime Minister, Shri Narendra Modi.

We take great pride in commencing our commercial power sales by initially providing up to 8 MW of power to two infrastructure assets of PCMC: the Ravet water pumping station and the Chikali sewage treatment plant. The power generated by our Waste to Energy facility not only promotes a cleaner environment but will also play a crucial role in maintaining the uninterrupted operation of these vital facilities.

The power supply will see a gradual increment by the end of the financial year, and the power sale will be ramped up to 11.76 MW. This expansion signifies a significant step towards achieving a greener and more sustainable energy ecosystem.

The total tonnage handled for Q2FY24 stood at ~1.15 million tonnes representing a robust growth of ~9% compared to the previous year. This growth is driven by the full-scale implementation of operations in recently acquired contracts and the expansion of our existing Collection & Transportation (C&T) sites. For H1FY24, we managed a total of ~2.35 million tonnes, marking a ~12% increase over the same period last year.

Antony Waste Handling Cell Limited

CIN: L90001MH2001PLC130485



In the C&T business segment during Q2FY24, our company effectively managed ~0.45 million tonnes, showing a ~7% growth compared to the previous year. Additionally, our Waste Processing business expertly handled ~0.70 million tonnes, demonstrating an ~11% growth year-on-year. Notably, during the quarter, we successfully completed the biomining of legacy waste at GNIDA, a groundbreaking achievement that cleared 2.19 lakh tonnes of legacy waste and reclaimed ~19 acres of landfill space for future use.

It's important to note that the total tonnage handled by the C&T business excludes those projects whose billing is based on fixed shifts/trips/household counts.

Operational Highlights:

1. In terms of Total Core Operating Revenue, which includes tipping revenue from C&T, Waste Processing, and Mechanical Power Sweeping operations, our company witnessed a remarkable improvement of ~20% growth in Q2FY24 compared to the previous year. This improvement accounts for various escalations in tipping fees and revenues from fixed shifts, trips, and household fees, building on the 14% year-on-year growth reported in Q1FY24.
2. Furthermore, we are pleased to report record-breaking sales of Refuse Derived Fuel (RDF), with total RDF sales reaching ~29,000 tonnes, a substantial increase compared to around 10,400 tons in the same period last year and ~27,700 tons in Q1FY24. Compost sales for the quarter amounted to ~2,200 tons, although these figures are lower on a year-on-year basis due to lower offtake of fertilizers in the states of Maharashtra and Gujarat, primarily attributable to weaker-than-expected monsoon this region.

Please note that the computation of core operating revenue excludes revenue from Contract income under Ind AS 115 - Revenue from Contracts with Customers. The information provided is on a consolidated basis and subject to a limited review by the management team.

Our company remains committed to promoting a sustainable and clean environment while delivering value to all our stakeholders.

Updates on these efforts will be provided at the end of every quarter throughout the current financial year.

Thanking you,
For Antony Waste Handling Cell Limited

HARSHADA
PRADEEP
RANE

Digitally signed by
HARSHADA PRADEEP
RANE
Date: 2023.10.16
10:51:20 +05'30'

Harshada Rane
Company Secretary and Compliance Officer
A34268

Ref.: AW/SEC/NSE/2023-24/59

Date: October 16, 2023

To,
Listing Department
National Stock Exchange of India Limited
Exchange Plaza, 5th Floor,
Plot No.C-1, Block G, Bandra-Kurla Complex,
Bandra (E), Mumbai 400 051

Script Code: AWHCL

Dear Madam/Sir,

Sub. : Business Update for Quarter end Half Year ended September 30, 2023
Ref. : Regulation 30 of SEBI (Listing Obligations and Disclosure Requirements), Regulations 2015
("SEBI Listing Regulations")

In accordance with SEBI Listing Regulations and Code of Practices and Procedures for Fair Disclosure of Unpublished Price Sensitive Information in terms of Regulation 8 of SEBI (Prohibition of Insider Trading) Regulations, 2015, the following is our business update highlighting the strong performance of the Company for the quarter and half year ended September 30, 2023 ("Q2 FY24" & H1FY24):

Our Company is making significant progress on our FY2024 priorities, focusing on boosting core revenue generation and optimizing our cost structure. We are elated to announce the inauguration of India's first Waste to Energy plant selling power under Green Energy Open Access Rules. This milestone project was inaugurated by the esteemed Prime Minister, Shri Narendra Modi.

We take great pride in commencing our commercial power sales by initially providing up to 8 MW of power to two infrastructure assets of PCMC: the Ravet water pumping station and the Chikali sewage treatment plant. The power generated by our Waste to Energy facility not only promotes a cleaner environment but will also play a crucial role in maintaining the uninterrupted operation of these vital facilities.

The power supply will see a gradual increment by the end of the financial year, and the power sale will be ramped up to 11.76 MW. This expansion signifies a significant step towards achieving a greener and more sustainable energy ecosystem.

The total tonnage handled for Q2FY24 stood at ~1.15 million tonnes representing a robust growth of ~9% compared to the previous year. This growth is driven by the full-scale implementation of operations in recently acquired contracts and the expansion of our existing Collection & Transportation (C&T) sites. For H1FY24, we managed a total of ~2.35 million tonnes, marking a ~12% increase over the same period last year.

In the C&T business segment during Q2FY24, our company effectively managed ~0.45 million tonnes, showing a ~7% growth compared to the previous year. Additionally, our Waste Processing business expertly handled ~0.70 million tonnes, demonstrating an ~11% growth year-on-year. Notably, during the quarter, we successfully completed the biomineralization of legacy waste at GNIDA, a

Antony Waste Handling Cell Limited

CIN: L90001MH2001PLC130485



groundbreaking achievement that cleared 2.19 lakh tonnes of legacy waste and reclaimed ~19 acres of landfill space for future use.

It's important to note that the total tonnage handled by the C&T business excludes those projects whose billing is based on fixed shifts/trips/household counts.

Operational Highlights:

1. In terms of Total Core Operating Revenue, which includes tipping revenue from C&T, Waste Processing, and Mechanical Power Sweeping operations, our company witnessed a remarkable improvement of ~20% growth in Q2FY24 compared to the previous year. This improvement accounts for various escalations in tipping fees and revenues from fixed shifts, trips, and household fees, building on the 14% year-on-year growth reported in Q1FY24.
2. Furthermore, we are pleased to report record-breaking sales of Refuse Derived Fuel (RDF), with total RDF sales reaching ~29,000 tonnes, a substantial increase compared to around 10,400 tons in the same period last year and ~27,700 tons in Q1FY24. Compost sales for the quarter amounted to ~2,200 tons, although these figures are lower on a year-on-year basis due to lower offtake of fertilizers in the states of Maharashtra and Gujarat, primarily attributable to weaker-than-expected monsoon this region.

Please note that the computation of core operating revenue excludes revenue from Contract income under Ind AS 115 - Revenue from Contracts with Customers. The information provided is on a consolidated basis and subject to a limited review by the management team.

Our company remains committed to promoting a sustainable and clean environment while delivering value to all our stakeholders.

Updates on these efforts will be provided at the end of every quarter throughout the current financial year.

Thanking you,
For Antony Waste Handling Cell Limited

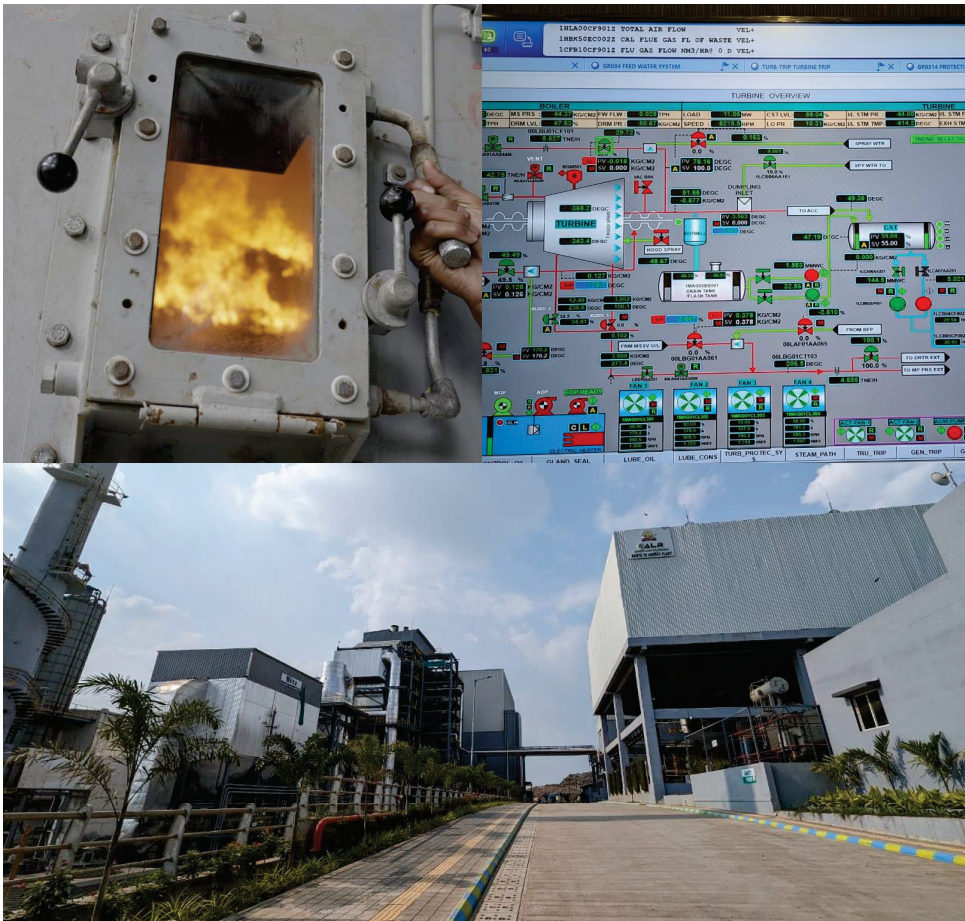
HARSHAD A
PRADEEP RANE
Date: 2023.10.16
10:52:00 +05'30'

Harshada Rane
Company Secretary and Compliance Officer
A34268



Quarterly Operational Highlights

September
2023



Quarterly Operational Highlights Q2FY24



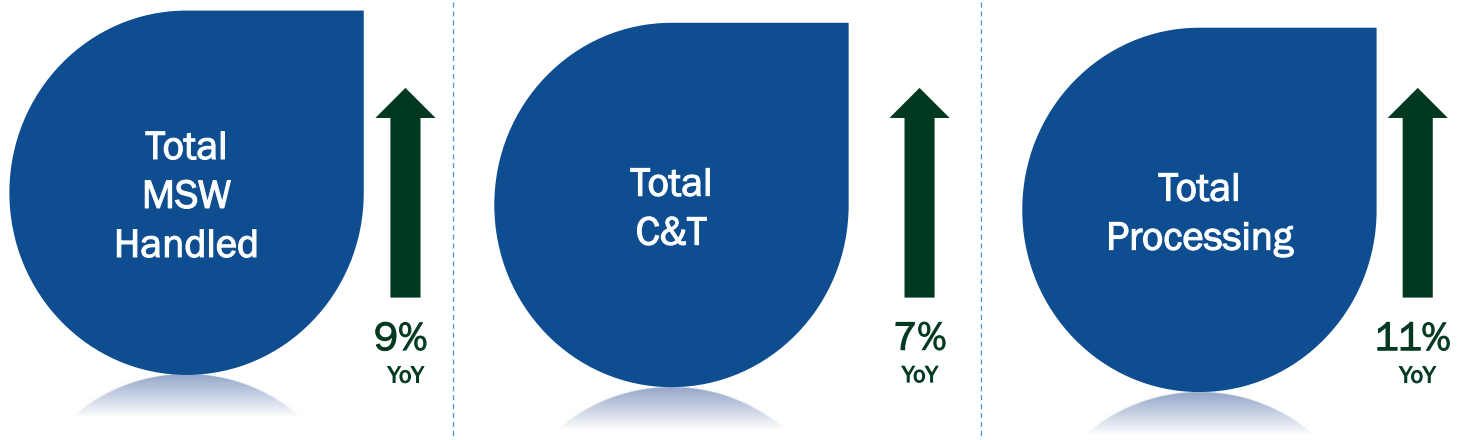
Highest ever
quarterly
Core Operating
Revenue

Record-Breaking
Sales
of Refuse
Derived Fuel
(RDF)

Successfully
completed the
biomining of
legacy waste at
GNIDA

Sustainability with growth

Core Operating Highlights



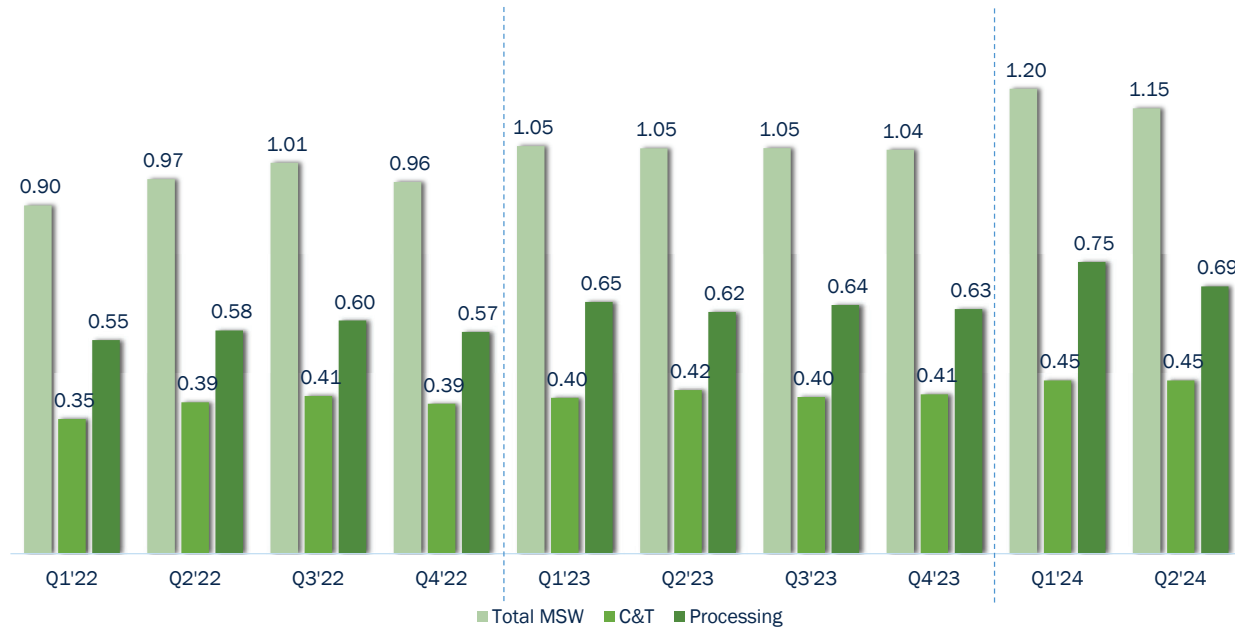
Total MSW includes the tonnage from C&T, Processing and sale of compost and RDF.

Sustainability with growth

Quarterly Operational Highlights



Million tonnes



Total MSW includes the tonnage from C&T, Processing and sale of compost and RDF.

Sustainability with growth

Thank you

