



CSR Action Plan 2022-23

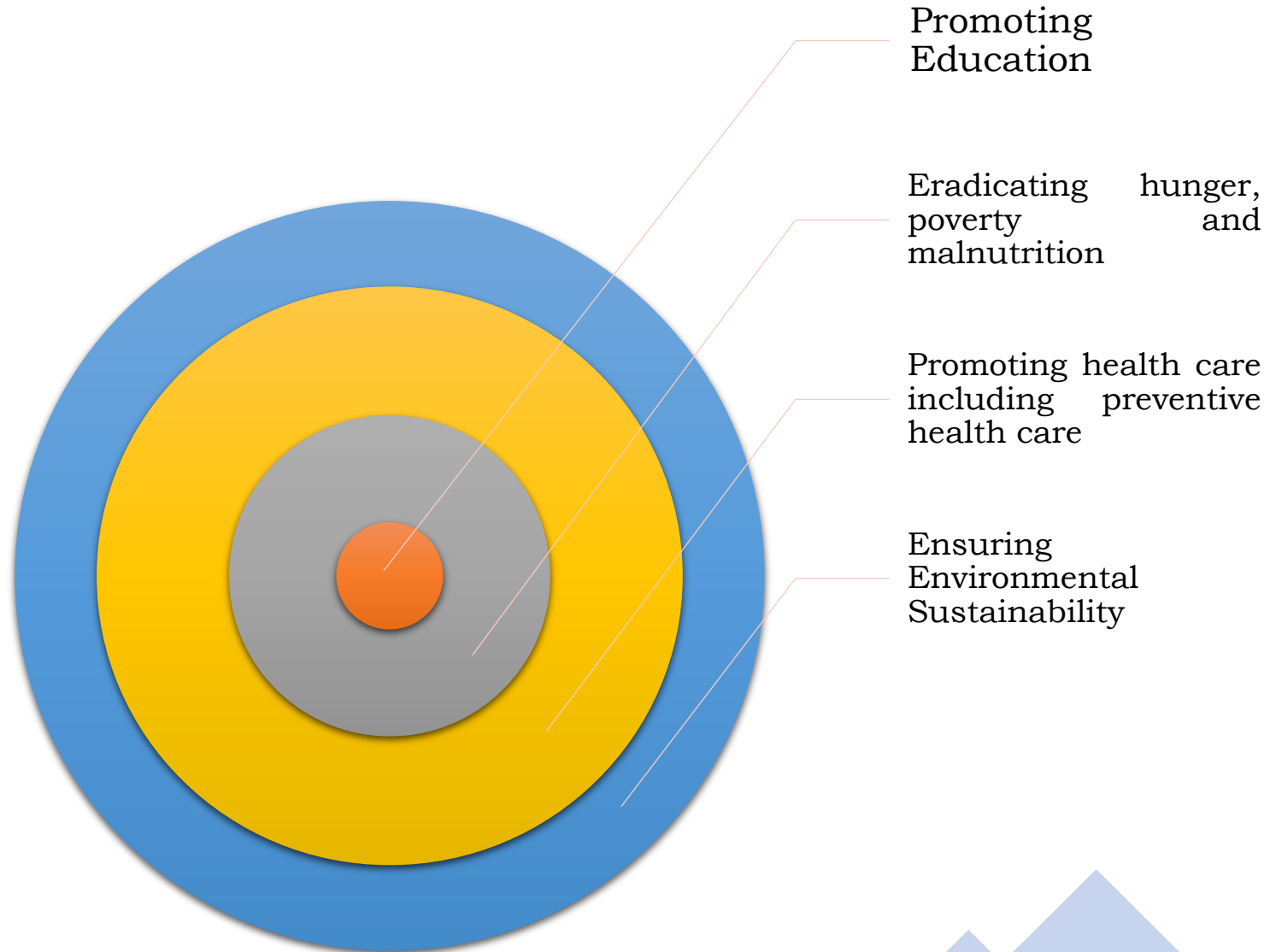
CSR AT AWHCL

- The Company believes that CSR is a process by which an organization thinks about its relationships with the stakeholders and integrates its economic, environmental, and social objectives in such a manner that it will contribute to the social good.

The main objective of the Company's CSR Policy is to lay down guidelines for the Company to make CSR one of the key focus areas and make a positive contribution to society through high-impact, sustainable programs. The Company's CSR initiatives have an underlying rationale of 'benefitting the community at large.

The Company is focused on identifying the communities/beneficiaries of the projects and understanding their needs. The CSR Policy aims to provide a dedicated approach to community development in improving healthcare infrastructure, supporting primary education, removing malnutrition, and rural development amongst others

Focus Areas



CSR Annual Action Plan 2022-23

CSR PROJECT	BUDGET OUTLAY	MANNER OF EXECUTION OF SUCH PROJECTS OR PROGRAMS	MODALITIES OF THE UTILIZATION OF FUNDS AND IMPLEMENTATION SCHEDULES FOR THE PROJECTS OR PROGRAMS	MONITORING AND REPORTING MECHANISMS FOR THE PROJECTS OR PROGRAMS	UTILIZATION REPORT
AWHCL Shiksha	₹ 0.93 Cr	Activities are undertaken by the Company along with its subsidiaries either Directly/ Through Implementing Agency	As per the procedure laid down by the Company/ Implementing Agency/ies	Obtaining Fund Utilization Certificate	To be received by March 2023
AWHCL Aarogya	₹ 0.93 Cr				
AWHCL Parivesh	₹ 0.23 Cr				
Others	₹ 0.23 Cr				

The Company, along with its subsidiary companies, at their respective meetings of the Board of Directors on the recommendation of the Corporate Social Responsibility Committee had approved the below Action Plan for the Financial Year 2022-23.